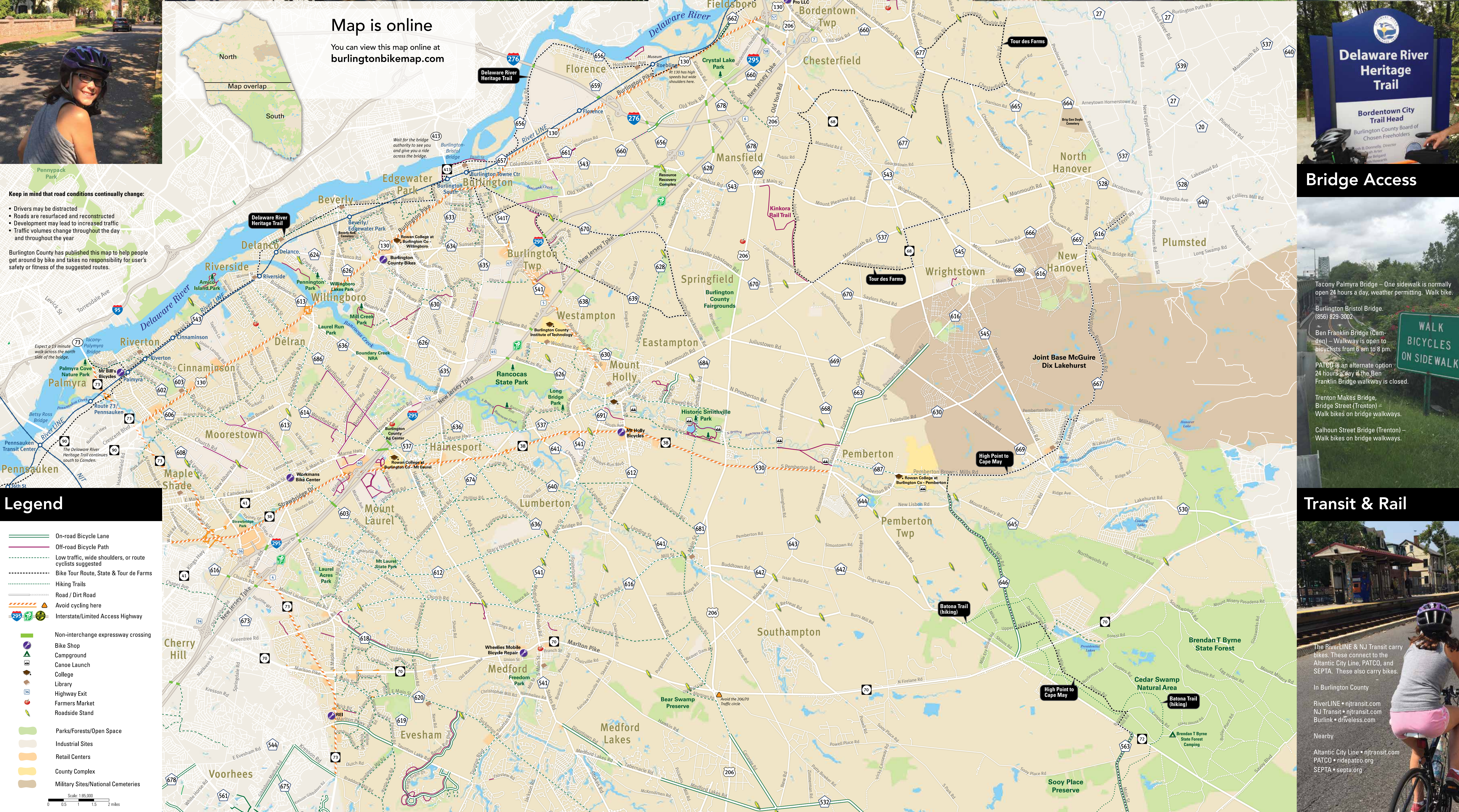
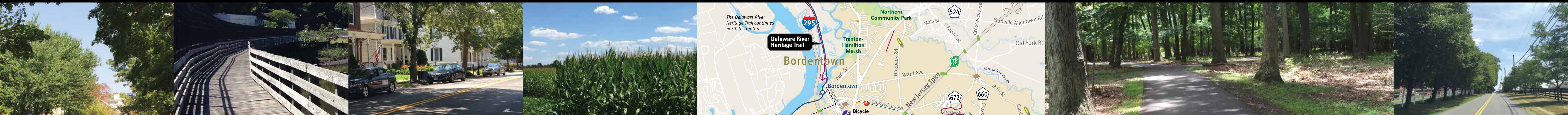


Bicycle Map { Quiet streets, trails, light rail service, & buses that carry bikes } { Tree-lined streets and generally slower traffic } { Scenic roads and farmstands, smaller roads have less traffic } { Wooded back roads with little traffic, often crossing streams } { Often accessible from smaller streets off the main highway } { Woods, fields and streams, often with trail systems away from cars } { For recreation, to work, to school, to the store, and for fun }



Map is online
You can view this map online at burlingtonbikemap.com

Keep in mind that road conditions continually change:

- Drivers may be distracted
- Roads are resurfaced and reconstructed
- Development may lead to increased traffic
- Traffic volumes change throughout the day and throughout the year

Burlington County has published this map to help people get around by bike and takes no responsibility for user's safety or fitness of the suggested routes.

- Legend**
- On-road Bicycle Lane
 - Off-road Bicycle Path
 - Low traffic, wide shoulders, or route cyclists suggested
 - Bike Tour Route, State & Tour de Farms
 - Hiking Trails
 - Road / Dirt Road
 - Avoid cycling here
 - Interstate/Limited Access Highway
 - Non-interchange expressway crossing
 - Bike Shop
 - Campground
 - Canoe Launch
 - College
 - Library
 - Highway Exit
 - Farmers Market
 - Roadside Stand
 - Parks/Forests/Open Space
 - Industrial Sites
 - Retail Centers
 - County Complex
 - Military Sites/National Cemeteries
- Scale: 1:85,000
0 0.5 1 1.5 2 miles



Bridge Access

Tacony Palmyra Bridge – One sidewalk is normally open 24 hours a day, weather permitting. Walk bike.

Burlington Bristol Bridge. (856) 829-3002

Ben Franklin Bridge (Camden) – Walkway is open to bicyclists from 6 am to 8 pm.

PATCO is an alternate option 24 hours a day if the Ben Franklin Bridge walkway is closed.

Trenton Makes Bridge, Bridge Street (Trenton) – Walk bikes on bridge walkways.

Calhoun Street Bridge (Trenton) – Walk bikes on bridge walkways.

Transit & Rail

The RiverLINE & NJ Transit carry bikes. These connect to the Atlantic City Line, PATCO, and SEPTA. These also carry bikes.

In Burlington County

RiverLINE • njtransit.com
NJ Transit • njtransit.com
Burlink • driveless.com

Nearby

Atlantic City Line • njtransit.com
PATCO • ridepatco.org
SEPTA • septa.org



Welcome

Tour ideas

Welcome to Burlington County

Burlington County is the largest county in the State, covering 827 square miles, extending from the Delaware River on the west to the Great Bay on the Atlantic Ocean to the east. There are 40 municipalities and about 449,722 residents (2014).

Burlington County is the statewide leader and a national leader in land preservation. At the same time, the County has set a high standard for smart growth planning, making it an attractive place for businesses to locate and expand, and for families to live, work, and play.

Board of Chosen Freeholders

Bruce D. Garganio Freeholder Director
Kate Gibbs Deputy Director
Joseph B. Donnelly
Mary Ann C. O'Brien
Ryan Peters

Burlington County Administration Building

49 Rancocas Road – Post Office Box 6000
Mount Holly, New Jersey 08060

Telephone: (609) 265-5000
Email: freeholders@co.burlington.nj.us
Web Site: www.co.burlington.nj.us

Map printed
February 2016

The New Jersey Department of Transportation features Burlington County in several bicycle touring guides.

Map titles at njcommuter.com

Select the **Biking in New Jersey** link.

- High Point to Cape May Bike Route
- East Coast Greenway
- Burlington County Bikeways
- Pine Barrens River Ramble
- Three Easy Scenic Rides
- New Jersey Bicycle Map & Resource Guide



County Park System



Over 2000 acres of developed parkland

With 2,000 acres of developed parkland and many more acres of land slated for park development, the residents of Burlington County can enjoy the trails, recreational water access, picnic facilities, and play areas that are close to home.

Parks

- Amico Island Park, Delran
- Boundary Creek Natural Resource Area, Delran
- Burlington Co. Community Agricultural Center, Moorestown
- County Fairgrounds, Springfield
- Crystal Lake Park, Mansfield
- Historic Smithville Park - Smith's Woods, Eastampton
- Laurel Run Park, Delran
- Long Bridge Park, Hainesport
- Pennington Park, Delanco
- Rancocas State Park, Hainesport
- Willingboro Lakes, Willingboro

Future Linear Trails

The Burlington County Parks System is in the process of acquiring and developing a network of interconnected linear trails. These trails will add a new dimension to the Parks System, allowing bikers and hikers, as well as horse-back riders, the opportunity to travel from park to park on groomed and maintained trails.

When complete, the Burlington County Parks System will be greenway-based, with regional trails connecting our parklands.

The first sections to be completed in our network include:

- Newton's Landing Trail, Delanco
- Rancocas Pointe Trail, Mt Laurel

The Burlington County Parks System also maintains a 14-mile water trail for canoes and kayaks between Pemberton and Mt Holly: Rancocas Creek Canoe Trail.

Museums, Galleries & Centers

- Historic Prison Museum, Mt. Holly
- Warden's House Gallery, Mt. Holly
- Lyceum of History and Natural Sciences, Mt. Holly
- Smithville Annex Gallery, Smithville Park
- Visitor's Center, Smithville Park
- Worker's House & Gallery, Smithville Park
- Amphitheater, Westampton
- Rancocas Nature Center & Trails, Westampton

Regional Trails

The Circuit - A 750-mile network of bicycle and pedestrian trails connecting people to jobs, communities, and parks in the Greater Philadelphia Region. To date 300+ miles have been built. Burlington County is home to three Circuit trails including the Delaware River Heritage Trail, Rancocas Creek Greenway, and the Kinkora Trail.



Delaware River Heritage Trail (DRHT) - History & Culture: This proposed 50-mile loop trail between Pennsylvania and New Jersey is envisioned to connect riverfront towns that are steeped in history.

Rancocas Creek Greenway (RCG) - Back to Nature: A proposed 25-mile mostly off-road trail is planned to connect regional park properties from Amico Island Park at the confluence of the Delaware River in the west to Brendan Byrne State Forest in the east. An existing 0.5 mile segment runs behind the Rancocas Pointe subdivision in Mount Laurel Township with trailhead access via a public-private partnership at Carlucci's Waterfront Restaurant, 876 Centerton Road, Mount Laurel, NJ 08054.

Kinkora Rail Trail - Preserved Farmland: As the name suggests, this trail will follow the 13-mile railroad right-of-way, from the Roebling Museum trailhead in the north, adjacent to the Delaware River, to the Pemberton Rail Trail (RCG) in the south. In between, riders will enjoy sweeping views of some of the most productive farm fields in the State.



Wharton State Forest



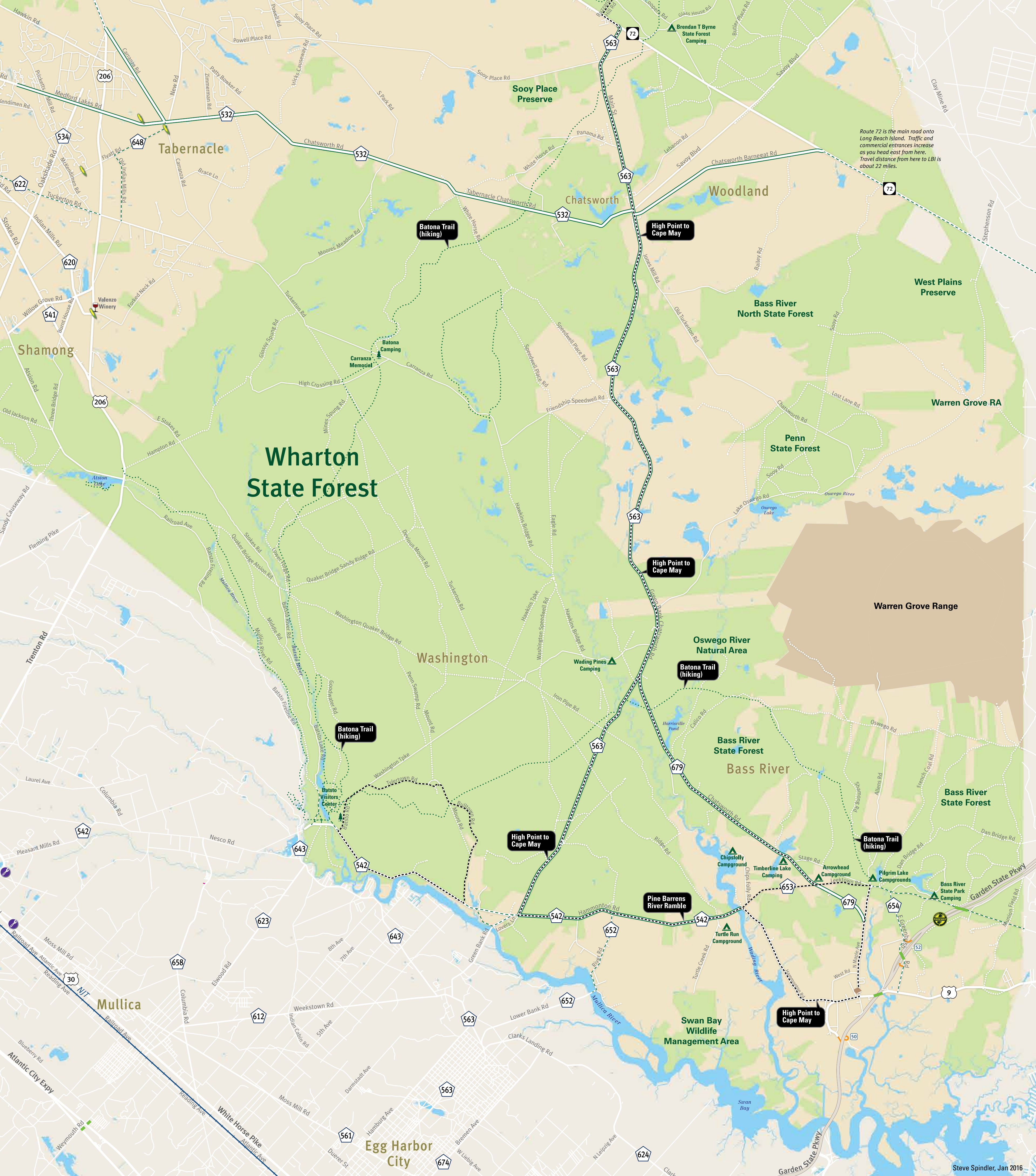
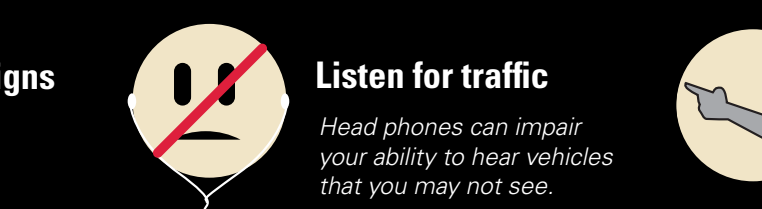
Back to Nature

Wharton State Forest is the largest single tract of land within the New Jersey State Park System. Here you can enjoy miles of unpaved roads for mountain biking and horseback riding and numerous lakes, ponds and fields ideal for wild-life observation.

Quiet on-road paved bike routes

Roads near Batsto Village can be particularly good for bicycling, whether they have bike lanes or not. If you want to take a train from Philadelphia or Pennsauken, you can access this area from the Atlantic City Rail Line's Hammonton Train Station.

It is the site of Batsto Village, a former bog iron and glass-making industrial center from 1766 to 1867 that currently reflects the agricultural and commercial enterprises that existed here during the late 19th century.



Steve Spindler, Jan 2016

